

Date
Company
Attention
Project
Reference SACP 40A-HS
Notes

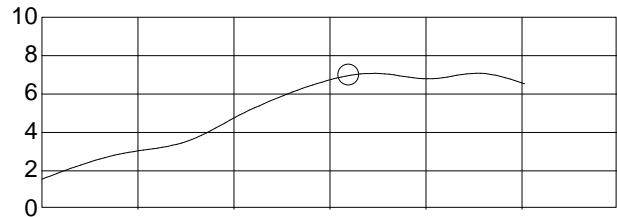


**SMART FAMILY OF
COOLING PRODUCTS**
1118 First St E. Humble TX 77338 281-540-2805
TACLA14492C / Registered dba of Combined Refrigeration, Inc.

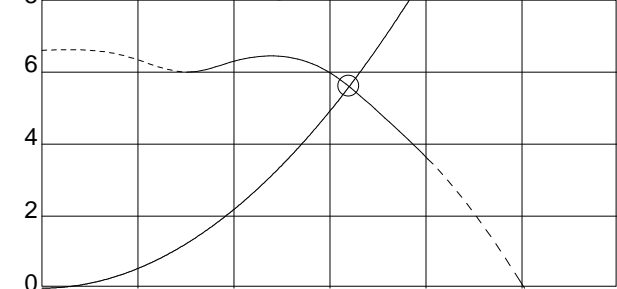
Fan Type	txt_SISWAirfoilCurved
Unit	BLW27016 (CLII)
Operating Conditions	Radial w/o bellmouth
Air Volume	6400 cfm
Static Pressure	5.60 inwg
Velocity Pressure	0.56 inwg
Total Pressure	6.16 inwg
Outlet Velocity	15.39 m/s
Fan Total Efficiency	70.8 %
Fan Static Efficiency	64.7 %
Fan Speed	2237 rpm
Air Temperature	20.0 °C
Altitude	0 m
Fan Absorbed Power	6.97 kW
Motor Installed Power	D132S (7.50 kW 60 Hz 2p)
Motor Speed	-
Service Factor	0 %
Plenum Size	1020 x 1020 x 1176 mm
Outlet Size	443 x 443 mm
Rec. Airflow Variation	0
Fan Pulley / Bush / Shaft	-
Motor Pulley / Bush / Shaft	-
Belt Length	-
Number of Belts / f	-
Static Belt Tension/Belt	-
Belt Deflection	-
Belt Speed (<40m/s)	-
Bearing Life (L10 / L50)	-
Starting Torque	-

Operating Limits	
Max. Absorbed Power	12.00 kW
Max. Fan Speed	2600 rpm
Temperature (Min-Max)	-20° to +85°C

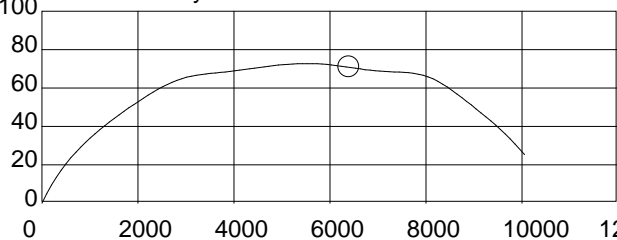
Absorbed Power in kW



Static Pressure in inwg



Total Efficiency %

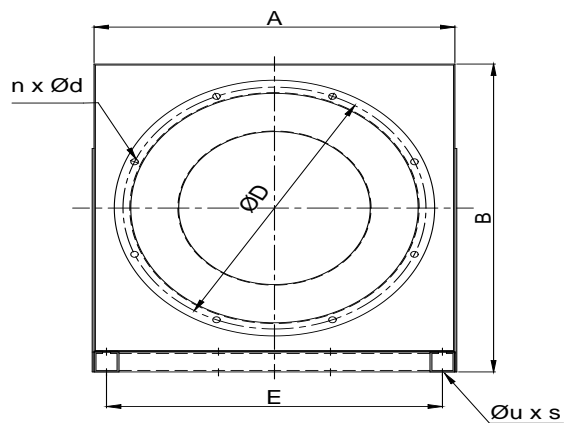
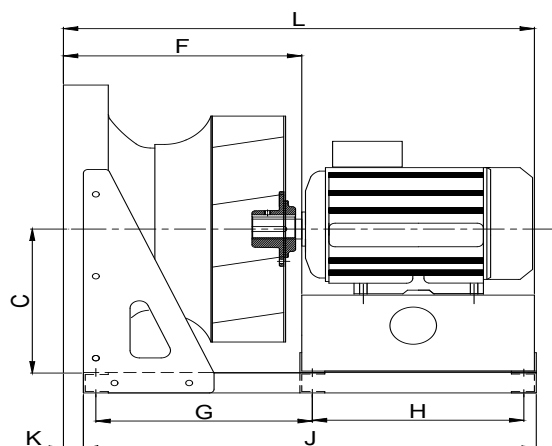


Air Volume in cfm

Hz	63	125	250	500	1k	2k	4k	8k	Overall
Lwi(Lin)	76	79	78	84	82	76	75	72	88 dB
Lwi(A)	51	64	69	81	82	77	76	71	86 dB(A)
Lpi(A)	44	57	62	74	74	70	69	64	78 dB(A)

* Sound data is for the inlet side

* Sound Pressure Level 1m, Room Conditions



A	B	C	D	E	F	G	H	J	K	L	UxS	NxS
630	680	315	540	580	428	395	362	807	33	840	13x18	8x12